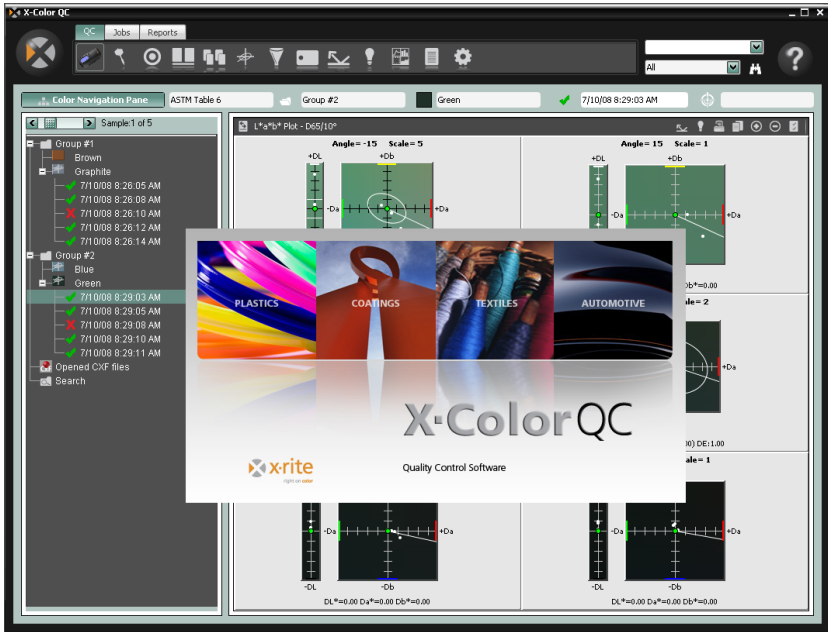


X-ColorQC



Quick Start Guide



Table of Contents

Overview	3
Setting Up.....	4
General Client System Requirements	4
Installing the Software	4
Connecting the Instrument	5
General Operation	6
Starting the Application	6
Choosing Your Instrument	7
Proper Measurement Techniques	8
Registering Your Software	8
X-Color QC Tools.....	10
QC Tab Buttons	10
Jobs Tab Buttons.....	11
Reports Tab Buttons	11
X-Rite Button Menu	11
Getting Help	12
Finding a Help Topic	12
Printing a Help Topic.....	13
Getting Additional Help	13
Technical Support	14
Software Assistance.....	14
FAQs	15
Appendix A – Enterprise Edition Information.....	17
Oracle Setup.....	17
MySQL Setup	18
MS SQL Setup.....	18

Copyright © 2010 by X-Rite, Incorporated

“ALL RIGHTS RESERVED”

X-Rite® is a registered trademark and X-Color QC™ is a trademark of X-Rite, Incorporated. All other logos, brand names, and product names mentioned are the properties of their respective holders.

X-Rite color video simulations displayed are not meant to accurately match solid color standards. Use physical samples such as PANTONE® Color Reference Manuals for accurate color.*

Overview

The X-Rite X-Color QC software provides immediate access to color control data in manufacturing facilities around the world. It is available to meet your specific business needs for paint, plastics, printing, packaging, automotive, coatings, ink, and textile industries.

The software puts you in charge of your color – in the lab or on the production line – with accuracy, efficiency, simplicity, and innovation.

You can edit standard tolerances; delete samples by date and time tags, and add or remove tags. Automatic archiving saves all previous data and provides the ability to view sample history when recalling standards.



Setting Up

General Client System Requirements

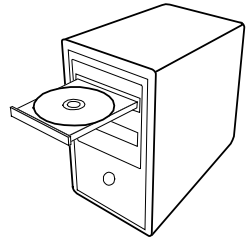
- Operating System
Microsoft Windows XP Professional (Service Pack 3),
Windows Vista Business or Windows 7 Professional
- x86 Family of processors (Intel Pentium III, Intel Pentium IV,
AMD Athlon, etc.)
- 2 GB of RAM or greater
- 32 MB dedicated graphics memory with a minimum screen
resolution of 1024 x 768 (1280 x 1024 recommended)

Installing the Software

X-Color QC is available as a Standalone, Standalone Multi-User, or Enterprise Edition depending on your purchase.

NOTE: Refer to Appendix A for information on supported databases setup when installing the Enterprise edition. PROCEDURES LISTED MUST BE EXECUTED PRIOR TO INSTALLING THE X-COLOR QC ENTERPRISE EDITION SOFTWARE.

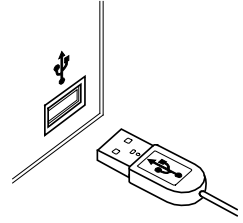
1. Insert the X-Color QC CD into your computer's CD-ROM drive and click the **Software Install** button to access the installer. Double-click the install icon to begin installation. If running on Windows Vista or Windows 7, right-click the install icon and choose "Run as administrator" to install.
2. The setup program guides you through the installation process. Follow the instructions on each setup screen to complete the installation.
3. Launch the application and properly set permissions and import example data. Other users can now access the system properly. If you did not license the application during the install and are running on Windows Vista or Windows 7, right-click the application shortcut and choose "Run as administrator" to run until licensed.



Connecting the Instrument

IMPORTANT: Always turn your computer off before connecting any instrument that utilizes a serial COM port.

1. Connect the instrument to the computer serial COM port or USB port. Connections vary depending on the type of instrument you have. Refer to the user documentation that accompanies your instrument for proper connection procedures.
2. Turn on the computer if applicable.



General Operation

Starting the Application

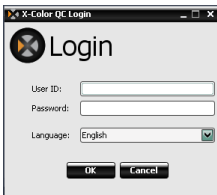


Once you have installed X-Rite X-Color QC, you can start the program by double-clicking the program icon. If running on Windows Vista or Windows 7 and the application was not licensed during the install, you will need to right-click the program icon and choose "Run as administrator" until the application is licensed.

A software registration screen appears (if not licensed). You can register your software now or click **Continue** to register later. You can run X-Color QC in Evaluation mode (unregistered) for 30 days. X-Rite recommends that you register your software as soon as possible. Refer to Registering Your Software later in this section for the procedure to register the software with X-Rite.



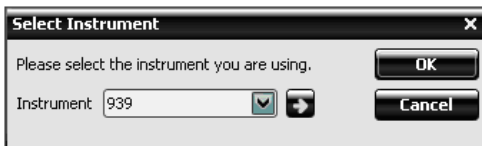
NOTE: Depending on the application package you purchased, a Login screen may appear after the registration screen. You must click in the User ID field and login with your user ID and password for a multi user system. A host IP is also required for the Enterprise edition. You can also change the language the application runs in from this screen.



The default password for the X-Color QC administrator (admin) is "password."

After login, click **OK** to continue.

Select your instrument model and click **OK** to continue.



This will only happen the first time you launch the software.

The X-Color QC Assistant appears. This screen provides short cuts to commonly used functions in the application. Click a button to launch the desired function. You can also select the Close button (x) to close the application.



Run a Job and Download a Job buttons only appear when a job is available.

If you do not want this screen to appear each time the application is launched, uncheck the **Show Assistant on Startup** box. Thereafter, the main application screen will always open when the program is launched. You can reactive the X-Color QC Assistant at a later time by checking **Show Guidance Window on Startup** option in the System Setup dialog.

Choosing Your Instrument

Once the application is launched, you need to select your instrument model and connection method used.

1. Click the Instrument Options button in the QC tool tab at the top of the application.
2. Select your instrument from the list. The instrument button changes to your selected instrument.
3. Select the instrument icon again and click on the **Configure...** in the list.
4. Select the COM port (if applicable) from the **Serial Port** list. Here you can set any other options (such as Active Illum/Obs or Audio Indicator) that may be available.
5. Click **OK** to save your selections and close the Configuration dialog.




Proper Measurement Techniques

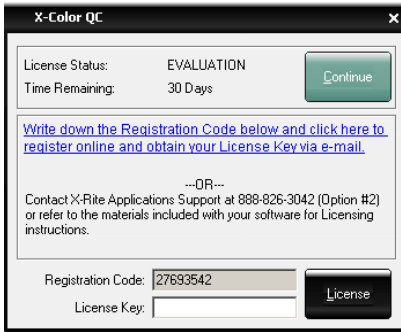
When using X-Color QC, proper measuring techniques are essential for accurate color data. Your color data is only as good as the measurements on which it is based. Follow the recommendations below to ensure the best possible measurement data.

- **Select a good measurement area** - Find a blemish-free area that properly represents the color.
- **Instrument alignment** - While taking a measurement, keep the instrument flat against the surface you are measuring.
- **Keep the instrument still** - While taking a measurement, keep the instrument *and* the sample you are measuring as still as possible.
- **Consult your instrument manual** - Please read your instrument manual for detailed instructions on the use and maintenance of your instrument.

These basic instructions should help you take precise measurements.

Registering Your Software

1. If you did not license the application during the install and are running on Windows Vista or Windows 7; right-click the program icon and choose "Run as administrator" to start the application. If your application is already running, you can click the X-Rite button menu in the upper-left of the application and select **License** to access the registration screen. 
2. Locate the X-Color QC Application Unique Identifier (AUI) number that is included with your software. Also, write down the Registration Code number that appears at the bottom of the X-Color QC License dialog.
3. If you are registering Online, click the link text. This link takes you to X-Rite's Product Registration page, where you select the product (X-Color QC) and then the software version number. You have to enter the Registration Code and AUI number. The AUI number is located on the CD case.
4. After completion, you receive the License Key number that allows you to register your software. This number will also be emailed to you if you provide an email address. You can also register your software by calling the phone number listed and providing Customer Service with the Registration Code and AUI numbers.



5. Enter the license key number obtained from Customer Service in the **License Key** field and click **License**. Your software is now licensed and the license screen will no longer appear when you start up your system.

X-Color QC Tools

X-Color QC's tools are located in tabbed ribbons that run along the top of the application. Select a tool tab to see specific buttons for the tool. Below is a brief description for the tools shown for each tool tab. Please refer to the on-line help system for a detailed description of tools and procedures.

QC Tab Buttons



Instrument Option – select the instrument model connected; and access calibration, and configuration functions.



Create Sample – create color sample data by measuring samples or selecting an alternative entry method.



Create Standard – create color standard data by measuring standards or selecting an alternative entry method.



Quick Compare – compare two or more different samples without associating the data with a standard.



Master Panels - create several prints/panels that need to be sorted before sending to suppliers/customers as color standards.



Global Tolerances – create, edit, and delete tolerance that can be easily selected during the creation of standards.



Sample Filters – create, edit, and delete sample filters. Once filters are created, it is also used to select a specific filter (e.g., today, this month, etc.).



Tags – create, edit, and delete text tags, numeric tags, and tag categories.



Illuminant/Observer – select the illuminant/observer combination that appears on all views.



Angle Selection - select angle data displayed for multi-angle instruments, or specular component data displayed for sphere instruments.



Views – select the number of view windows that are displayed and create custom view sets.



Reports – select the type of report that is generated.



Jobs – perform job procedures, send standards to your instrument, and retrieve samples from your instrument.

Jobs Tab Buttons



New Job – create a new job for downloading.



Edit Job – edit an existing job.



Save Job – save a new job or changes to an existing job.



Delete Job – delete a stored job.



Run Job – run the current job selected for verification of workflow.



Job Analysis – used to view current job data.

Reports Tab Buttons



New Report – create a new report.



Edit Report – edit an existing report.



Save Report – save a new report or changes to an existing report.



Delete Report – delete a report.



Run Report – run the current report.

X-Rite Button Menu



Provides access to the system setup, password change, import/export data options, license screen, print screen, about, and application exit.

Getting Help

Use the X-Color QC help system while in the software application. The help system includes step-by-step instructions for specific tasks, conceptual and reference information, and a glossary of terms. You can use the Contents, Index, or Search function to locate topics.



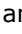
The help system uses the same technology as web pages—links to related topics, definitions, and more detailed information appear as blue underlined text. Click these links to move to other topics in the help system.

Finding a Help Topic

You can find topics using the **Contents**, **Index**, or **Search** buttons. Each button allows you to find information in a different way.

1. From the X-Color QC application, click the help icon in the upper left-hand corner to open the help system.
2. To browse through topics by category, click the **Contents** button.



Topics, which are represented with an arrow icon , are grouped within chapters, represented by plus icons . You can expand the contents of a chapter by clicking the plus icon. When a chapter is expanded, the plus icon changes to a minus icon . Click the topic that you want to view, and the selected topic opens in the right frame of the window.

3. To view a list of index entries, click the **Index** button.

The Index includes a list of keywords in the help system. In the text box, type the term that you want to find or select from the list. The program automatically scrolls to the first matching keyword in the index. You can scroll through the index to look at other matching topic names. Click the keyword you want to display. The selected help topic opens in the right frame of the window.

4. To perform a full-text search across the entire help system, click the **Search** button.

In the text box, type the word that you want to find. Click **Go** to begin the search. The program will identify every topic which contains that word anywhere within the text. All matching topics appear in the list area. Click the topic you want to display. The selected topic opens in the right frame of the window.

Printing a Help Topic

To print the current help topic, click **Print** on the toolbar (you can also right-click inside the topic and then choose **Print** from the shortcut menu).

Getting Additional Help

Clicking **More Help** on the toolbar will open the Support page on the X-Rite website. Here you can browse to your product to find available downloads and common helpdesk questions.

Technical Support

X-Rite's customer support department is fully staffed with qualified support technicians to assist you. When you contact X-Rite, please include the following information.

- Your operating system (including any Service Packs)
- Your software version number
- Your name and company name
- Your telephone and fax numbers (if applicable)
- The error message related to your problem (if applicable)
- The steps you were performing before the problem occurred

When contacting customer support via telephone, you will need to have the software running within easy reach.

NOTE: For hardware assistance, refer to your instrument manual.

Software Assistance

Telephone: 800.248.9748 or 616.803.2100

Web: http://www.xrite.com/top_support.aspx

Email: <mailto:casupport@xrite.com>

Include the information listed above, and use "X-Rite X-Color QC Software" as the title or subject of the message.

FAQs

Listed below are several FAQs for X-Color QC. Please visit the Support page at www.xrite.com for additional FAQs and support information.

1. ***How do I license my software?***

After the initial installation, you have 30 days to register your software. You need your software AUI number and your registration code for the registration. The AUI is located on the CD case. If you purchased an upgrade you need your old registration code. The registration code (an 8 digit number) is displayed when you start the software. It can also be found by clicking the X-Rite menu button and selecting the License... item. With this information, you may register your software on-line or by calling X-Rite customer service. You will receive a license key which you enter in the License Key field and then click on License.

2. ***I just installed my evaluation software and it says my evaluation period has expired. What's wrong?***

You need to be an administrator when installing X-Color QC on your computer. Please contact your IT department. Even if you are an administrator for that PC, if you did not license the application during the install and are running on Windows Vista or Windows 7, you must right-click the application shortcut and choose "Run as administrator" to run until the application is licensed.

3. ***What is the default password for the X-Color QC software?***


The default password for the X-Color QC administrator is "password".

4. ***How do I transfer my files from my old software to my new software?***


If you have an older Master Series program such as QA-Master, Paint Master, Plastic Master, Textile Master or Ink Master 1.X, you need to use the Database Export Utility found on your installation CD. For a tutorial on using the Database Export Utility, visit our Website at http://www.xrite.com/top_support.aspx. If you have QA-2000, Formulation Master 2001, or any version of X-RiteColor Master, open the program and from the main menu select Database-Find Standard. This will open the Find Standard dialog where you will click the Search button to open the Standard Search Definitions dialog. Select the default "All" definition and click the Search button. Click the Select All button and then the Transfer button. Make sure your Filter is set to "All Samples" and then save an XTF file to the desired location. After this operation, you can

import your data using the Import feature (under the X-Rite logo button).


5. ***I can't communicate with my instrument, how do I select a different COM port?***

To select a different COM port, click the Instrument button  ->Configure... -> Serial Port selection.

6. ***How do I calibrate my instrument?***

To calibrate the instrument, click the Instrument button  ->Calibrate... and follow the instructions. Refer to the instrument manual for additional information.

7. ***How can I get more information?***

You may find more information in the help file by clicking the Help icon  and then clicking Contents, or online: www.xrite.com or www.measureitrite.com.

Appendix A – Enterprise Edition Information

Please refer to the procedures that follow for a brief description on setting up your particular database when using the Enterprise edition.

NOTE: This procedure should be followed in order to successfully complete the xcolorqc database creation procedure, and **MUST BE EXECUTED PRIOR TO INSTALLING THE X-COLOR QC ENTERPRISE EDITION SOFTWARE.**

Oracle Setup

1. Start the Oracle Database Configuration Assistant.
2. Select "Create Database" in Step 1.
3. Select "General Purpose" in Step 2.
4. Include "xcolorqc", along w/your domain information in the Global Database Name field in Step 4.
5. Ensure "xcolorqc" is entered for the SID in Step 4.
6. Proceed through subsequent steps until you reach Step 9, selecting defaults or custom values which best serve your environment's needs.
7. Select the "Custom Scripts" tab on Step 9/Database Content. Click "Run the following scripts", then click "Add", locate the "OracleInit.sql" script included with the X-Color QC software, and select it in the file chooser.
8. Proceed through subsequent steps until you reach Step 12, selecting defaults or custom values which best serve your environment's needs.
9. Ensure the "Create Database" checkbox is checked and the value "xcolorqc" is in the name field.
10. Click "Finish", then "OK" to start the database creation process.
11. Log on to Oracle Enterprise Manager and connect to the new xcolorqc database.
12. Under the Administration section, open the "xcolorqc" user and ensure it has been assigned the CONNECT role and has the CREATE SEQUENCE and CREATE TABLE System Privileges.
13. If all prior steps complete successfully, run the X-Color QC Enterprise Installer for Windows.

MySQL Setup

1. Connect to the desired MySQL server as "root" user using your tool of choice (SQLyog, Toad, MySQL Query Browser, etc).
2. Execute the "MySQLInit.sql" script supplied with the X-Color QC Enterprise Edition software bundle.
3. Verify that the "xcolorqc" database has been created.
4. Verify that the "xcolorqc" user has been created.

Note: Due to the nature of how the X-Color QC Enterprise Edition may be setup upon install (server hardware running the X-Color QC Enterprise Edition Application may contain the MySQL instance on the same hardware, or the MySQL instance may reside on a separate hardware server tier), the "xcolorqc" user is initially set up for both "localhost" and wildcard '%' access from ANY arbitrary host. DBAs may need to restrict the '%' wildcard setting when running the X-Color QC Enterprise Edition Application and the MySQL instance on separate tiers based on the appropriate host names for security purposes.

MS SQL Setup

1. Connect to the desired Microsoft SQL Server 2005 server either as an Admin user through Windows Authentication or as "SA" using SQL Server Authentication
2. Execute the "MSSQLInit.sql" script supplied with the X-Color QC Enterprise Edition software bundle.
3. Verify that the "xcolorqc" database has been created.
4. Verify that the "xcolorqc" login was created; Under security/logins, select the "xcolorqc" login, then select properties/user mapping and verify that the login maps to the "xcolorqc" user and that it has the "db_owner" database role membership assigned.
5. Verify that the "xcolorqc" user has been created; Select the "xcolorqc" database under the server's database list. Under properties/general, ensure that the "db_owner" role member is checked for the "xcolorqc" user.



Corporate Headquarters - USA

4300 44th Street SE
Grand Rapids, Michigan 49512
Phone 1 800 248 9748 or 1 616 803 2100
Fax 1 800 292 4437 or 1 616 803 2705

Corporate Headquarters - Europe

Althardstrasse 70
8105 Regensdorf
Switzerland
Phone (+41) 44 842 24 00
Fax (+41) 44 842 22 22

Corporate Headquarters - Asia

Room 808-810
Kornhill Metro Tower, 1 Kornhill Road
Quarry Bay, Hong Kong
Phone (+852) 2 568 6283
Fax (+852) 2 885 8610

Please visit www.xrite.com for a local office near you.