



## Color iQC and Color iMatch Settings and Templates Guide

---

Version 8.0 | July 2012

Jobs and their contents, settings, and layouts can be derived from templates and settings files, allowing a customer to create many tailored “job types” that are preset for particular functions they routinely do.

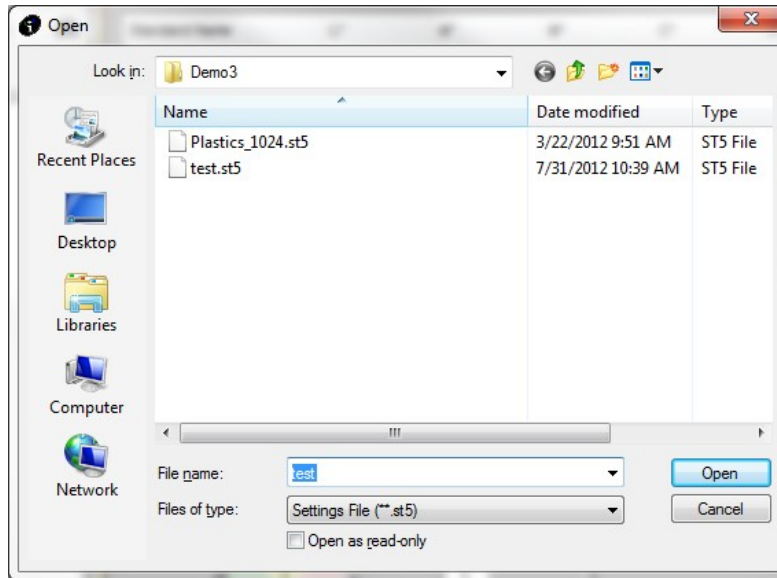
### **Understanding Jobs, Settings Files, and Templates**

A job in Color iQC and Color iMatch is basically a file or document. Multiple jobs can be opened at the same time and managed through the software. Jobs can be stand-alone with their settings self-contained or they can store their settings in a file that they point to and can share with other jobs. Jobs can also be created using templates.

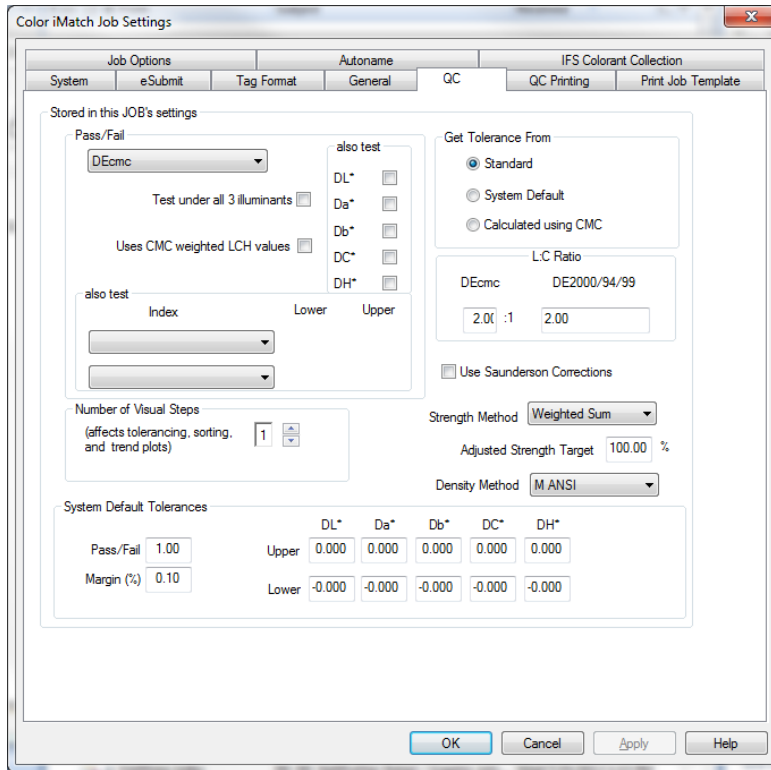
### **Creating a New Settings File**

1. To create new “settings files,” open a new, blank job by clicking once on the “New Job” command under the e-Job / File menu. *The File menu will appear when no jobs are open; the e-Job menu will be available when there is at least one job open.*
2. The new job will open. Click once on the “Change settings file reference” command under the Job menu.

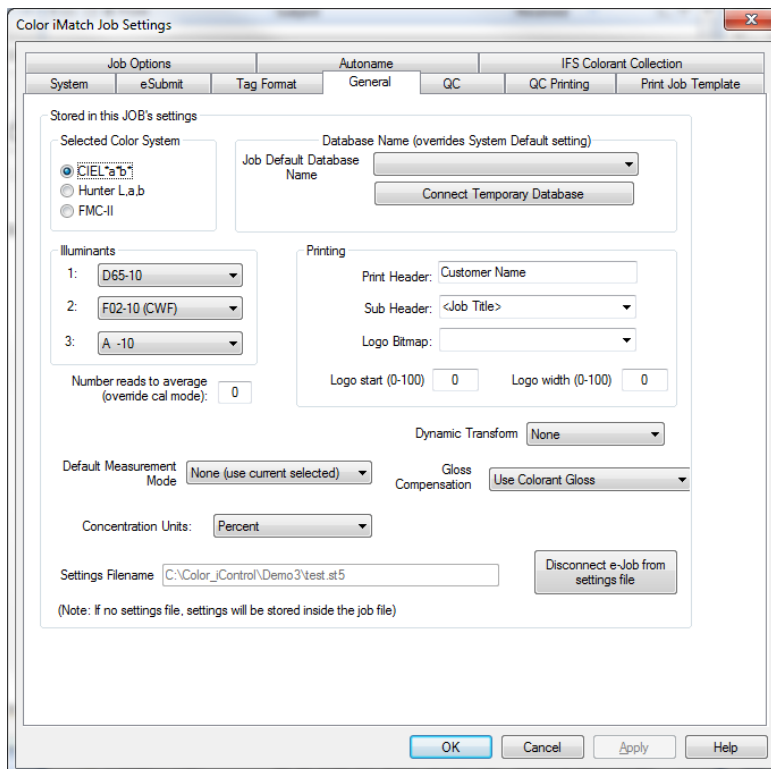
3. The Open dialog box will appear with the available settings files listed, except for the defaults which are stored in a different place. (If you want to edit the default settings file, you must use the Edit Default Job Settings under the File menu.) Enter a name "in the "Filename" field and click on the <Open> button.



4. The program will automatically create a new settings file using the name you entered and associate it to the current job. At this point, click on Application | Settings in the main program menu. The Settings dialog box will open.



5. Click on the General tab of the Settings dialog box to make choices with regards to the selected color system, illuminants, printing, and other default parameters. Click on <OK> when finished.

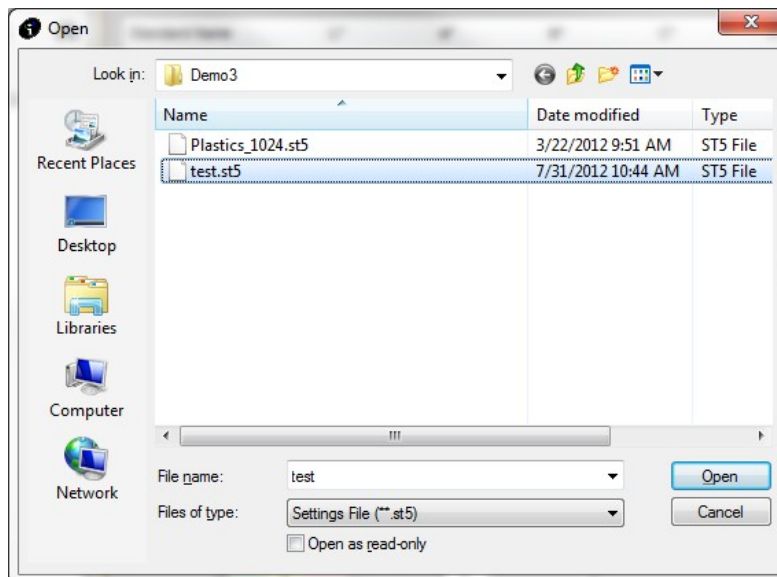


6. Click once on the “Save Settings” command under the e-Job menu. This will save the settings you selected into the file you created. Once you save the settings, the new “settings file” is complete and ready for use. (Note: The blank job you opened in order to create the file may be closed without saving.)

## Using Alternate Settings/Creating a Template

You can associate any job with a settings file. However, an easier way exists to create jobs associated with a setting file is to create a template that automatically points to that settings file. Any jobs created using a template will automatically be associated with the correct settings file.

1. Open a new, blank job by using the “New e-Job” command under the e-Job menu.
2. Click on the “Change settings file reference” command under the e-Job menu. Select a settings file to use for this template by clicking on it once to highlight it and then clicking on the <Open> button.



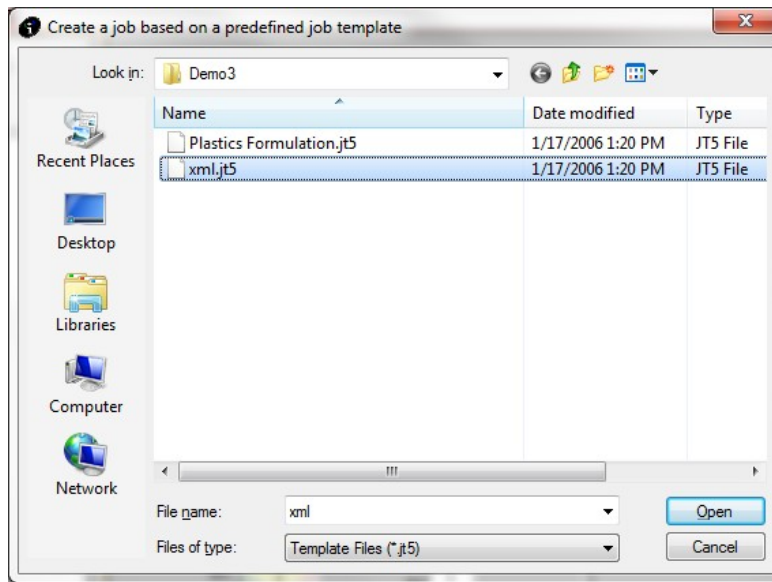
3. Save the Job by clicking on the “Save As...” command under the e-Job menu. Note that you must save the job before you can save it as a template. Name the job appropriately.
4. Once the job has been saved, click on the “Save as template” command under the e-Job menu.
5. Enter in a name for the template. Templates are saved using a “\*.jt5” extension.

6. You may now open new jobs using the template you have created by clicking on the “New from Template” command under the e-Job/File menu. Those jobs will automatically be associated with the selected settings file.

### Creating a Job from Template

You may create new jobs from the templates you create by using the “New from Template” command under the e-Job menu.

1. Click on e-Job in the main program menu.
2. Click on “New e-Job from Template” menu item
3. The Open dialog will appear with the available templates listed. Click once on a template name to select it.

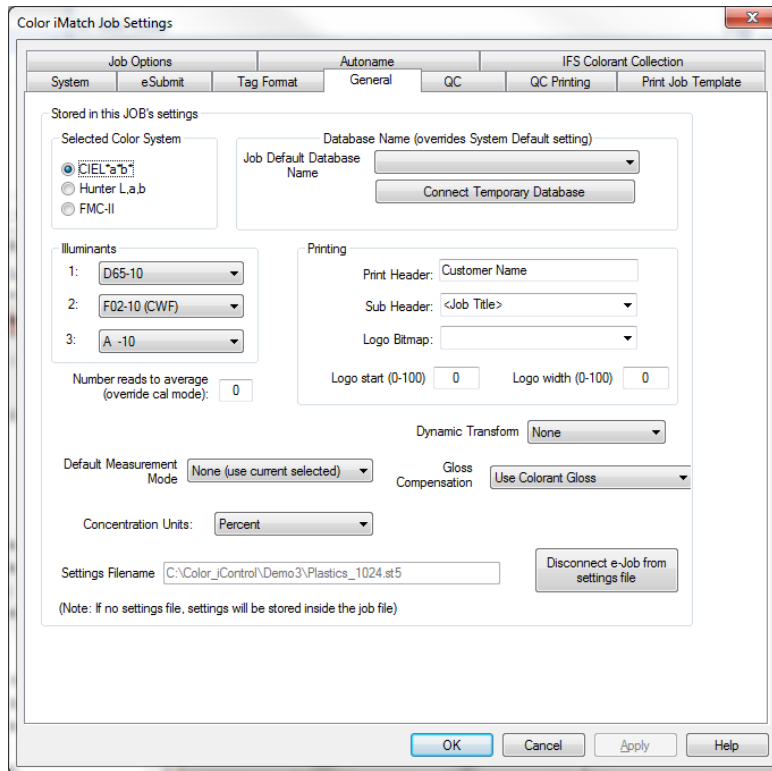


4. Click on <Open>. You now have a new job that points to the settings file.

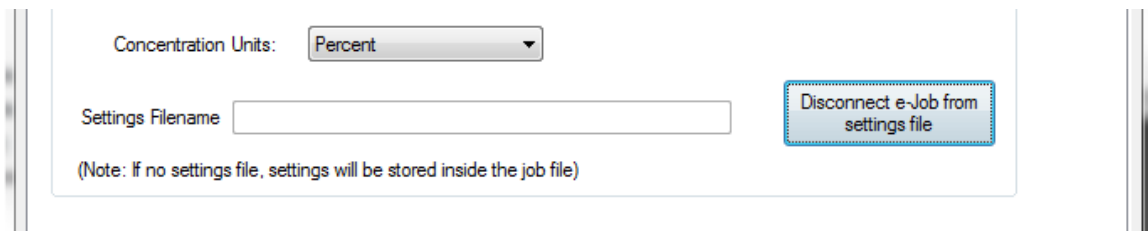
### Disconnecting a Job from Its Settings File

If you have selected to use settings files as the default method of storing settings for your jobs, you may still create jobs that are self-contained by disconnecting the job from its settings file. When you do this, the settings that are stored in the settings file will automatically be copied from the file into the job. Follow the instructions below to disconnect a job from its settings file and turn it into a self contained job. These instructions assume that the job is already open in the main program window and is the active job.

1. Click on the Application menu and select the “Settings” menu item.
2. The Settings dialog will open. Go to the General settings tab.
3. At the bottom of the General settings tab is a button marked “Disconnect this job from settings file.”
4. Click once on that button.



5. The settings file listed in the “Settings Filename” field should disappear.



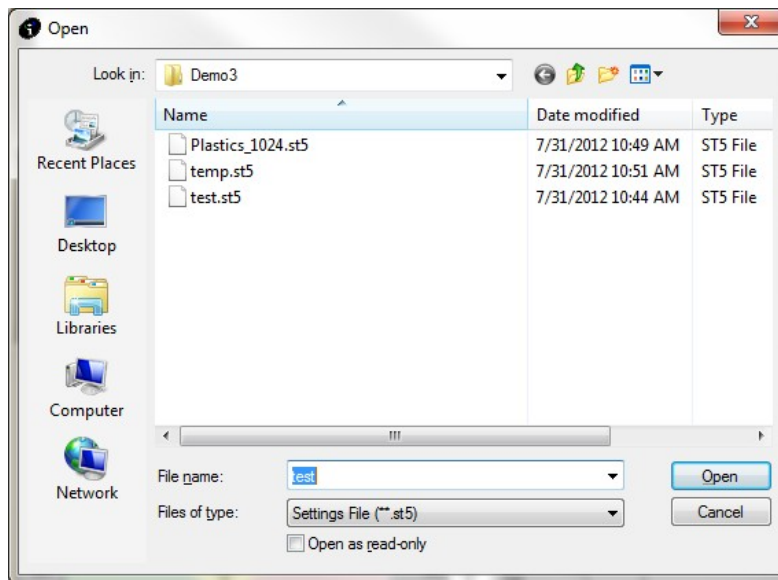
6. The job is disconnected from its original settings file and that information is now stored in the job itself. Click on <Apply>.

7. Click on <OK>.

## Connecting a Job to a Settings File

This section describes how to connect a job to a different settings file. This will overwrite the settings stored in a standalone job with the new settings from the file.

1. Click on the e-Job menu.
2. Click on “Change Settings File Reference.”
3. The Open dialog box will open displaying the available settings files.



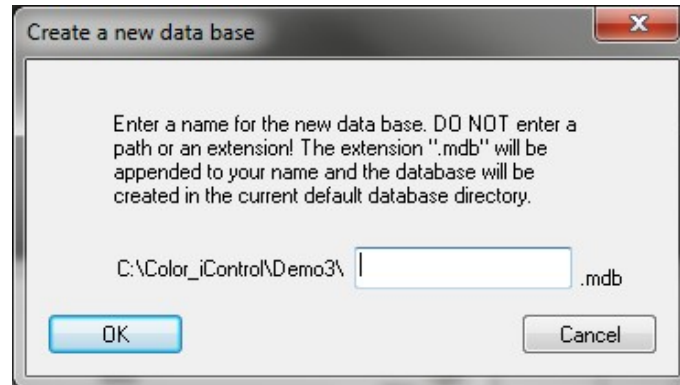
4. Click on the appropriate settings file name.
5. Click on the <Open> button.
6. The current job’s settings are now coming from the selected file. You can check this by opening the Settings dialog (Application | Settings...) and looking in the General tab.

## Establishing the Default System Settings

The next step in setting up the program is to establish the default system settings. Double-click on the Color iQC or Color iMatch desktop icon to restart the program. Click on the <Open without e-Job> button. At this point, you will need to decide if you want to store your data in a database as well as in jobs. If you wish to store your data in a database, you will need to create it. Follow the steps below to create a database for use with Color iQC or Color iMatch.

## Creating the Database

1. Click on the blank document button to open a new job (or you may click on File | New Job).
2. Once a blank job is open, click on Data | Create an empty Data Base...
3. A small dialog box will open allowing you to name the database. Enter a name for the database. The program will automatically append the \*.mdb extension to the name you enter. The path where the program will place the database will be displayed.

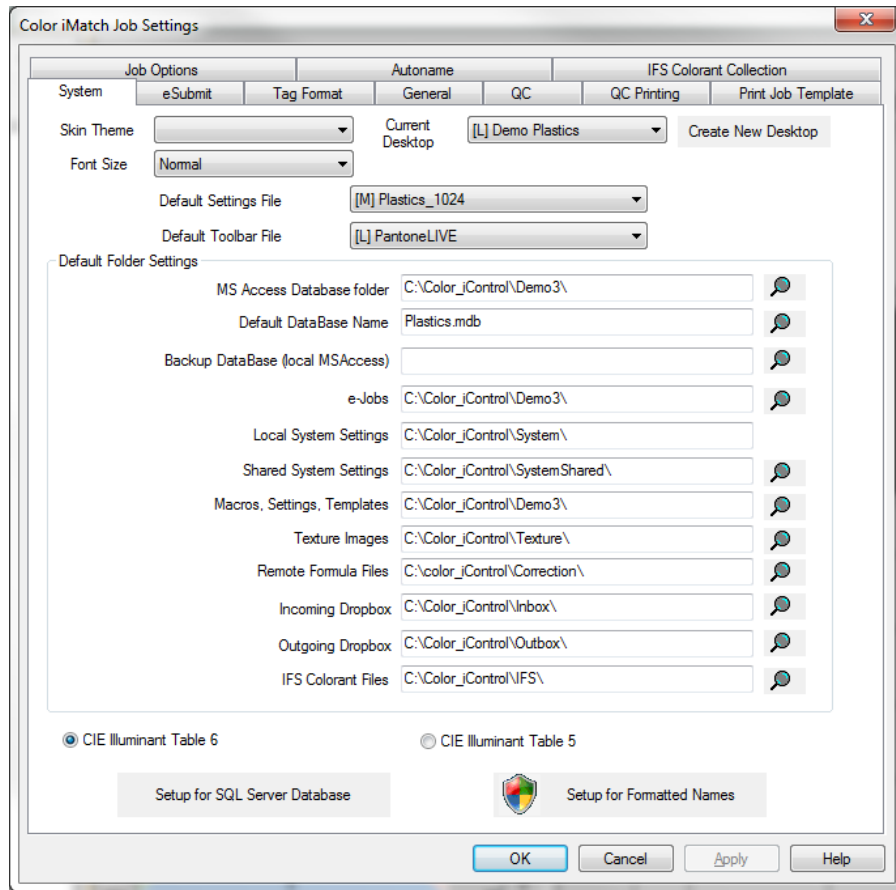


4. Click <OK>.

### **Editing the Default System Settings**

1. Click on the Application menu followed by the “Settings...” command (or you may use the “pencil and pad” button on the toolbar).
2. Click on “System” tab.
3. The Default System Settings tab will be displayed.





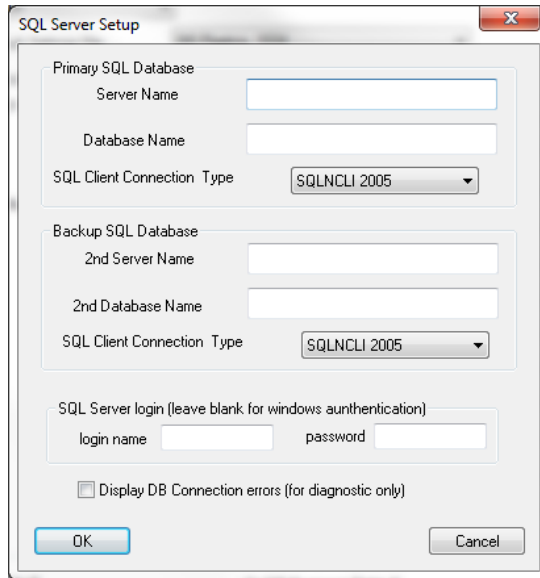
4. Inspect the path settings as they are shown in the various fields. (See the table below for a description of each path/field.) The database you created and named should be displayed as the default database. Generally, you should let the path settings remain set to their defaults unless you have a good reason to change them. For example, you may want to set up your system to have the database located on a network drive so that others can access it. In that case, you will need to change the database path to point to the correct drive and directory where you will be storing your data. (These path definitions may be specified using UNC conventions. See your network administrator for help with that.)
5. Click on <OK> when you have finished defining the paths for storing the various types of files associated with Color iQC and Color iMatch.

System Settings	
Setting	Description
Skin Theme	Choose from a selection of predefined windows skin themes to enhance software appearance.
Current Desktop	This field allows you to select a desktop. Color iControl allows the creation of desktop layouts that can affect many of the software's operating parameters, including such global settings as the default database folder or default jobs folder. In addition, a desktop can be associated with a user ID so that as soon as a user logs on to the system (even if passwords are disabled), the correct desktop will instantly be applied to the program.
Default Settings File	This field will display the settings file associated with the current desktop. Click on the magnifying glass button to the right of the field to select a different settings file.
Default Toolbar File	This field will display the toolbar file associated with the current desktop. Click on the magnifying glass button to the right of the field to select a different toolbar file.
MS Access Database Folder	Default folder location for any databases needed by the system.
Default Database Name	Name of a default database for use with Color iControl. Enter in full name of the database including "*.mdb" extension. This database will be used if a database specified in the job being opened cannot be located or opened, or if the job does not contain a database name.
eJobs	Default location for the storage of Jobs.
Local System Settings	This field displays the location for the storage of local user settings; it cannot be modified (unless system is online version). These settings are private to a user and should not be shared between users.
Shared System Settings	This field displays the location for the storage of shareable user settings. These settings are typically shared between all users of a network system, and can reference a shared network drive.
Macros, Settings, Templates	Default location for macros, templates, and settings files.
Texture Images	Default location for the storage of images and texture images.
Remote Formula Files	Specifies location where formula output files will be written to...can be the network path for a dispenser folder.
Incoming Dropbox	Default location to store incoming submits.
Outgoing Dropbox	Default location to store outgoing submits.
IFS Colorant Files	Location where all IFS files (and .samples files) will be located.
Illuminant File	these radio buttons allow you to select from either of the 2 standard CIE illuminant tables. Table 6 is the current CIE recommendation and should be used unless you are trying to agree with actual raw color values from old systems that used Table 5.

There are two additional setup options available:

### Setup for SQL Server Database

This option allows you to enter the information required to connect to a MS SQL Server database. Information from your IT department will be required to make this connection.



## Setup for Formatted Names

This option allows you to configure the software to use formatted naming when taking measurements.

