



## Color iQC and Color iMatch Software Installation Guide

---

**Version 8.0 | July 2012**

### **Installation on Windows XP SP3:**

1. Login with full local administrator permissions.
2. Insert the CD and it should Auto Run or use Windows Explorer and double click the installation EXE file. (see installation steps below)
3. Once installation is completed and while still logged in as administrator start the software. The software will run for up to 30 days in demo mode until fully licensed. While in demo mode you must always log into the computer with full local administrator permissions. If

you run the software without administrator permissions it the demo mode will expire.

4. Each time you start the software in demo mode the licenses dialog will appear. At the top it will indicate how many days are left in the demo period. In the middle is a link to the website to register and receive your license key. At the bottom of the license dialog will be a registration code and a place for the license key. If you do not have internet access on the installed computer you may go to <http://www.xrite.com/registration.aspx> from any computer. Make note of the registration code in the software. If the registration code is zero or blank you do not have full administrator permissions or did not choose "Run as administrator".
5. You can license the software or click Continue to continue on in demo mode. The software will automatically guide you through setting up the instrument and your default settings.
6. Each time you start Color iQC or Color iMatch the license page will appear until fully licensed. Click Continue if you do not have the permanent license key yet.
7. Once registered and you receive your license key, enter it in the box provided and click the License button. You will get a message that your product is now licensed.
8. Once fully licensed you will no longer have the license dialog box show up when you start the software and may log into the computer with normal user permissions.

### **Installation on Windows 7 (32 or 64 bit):**

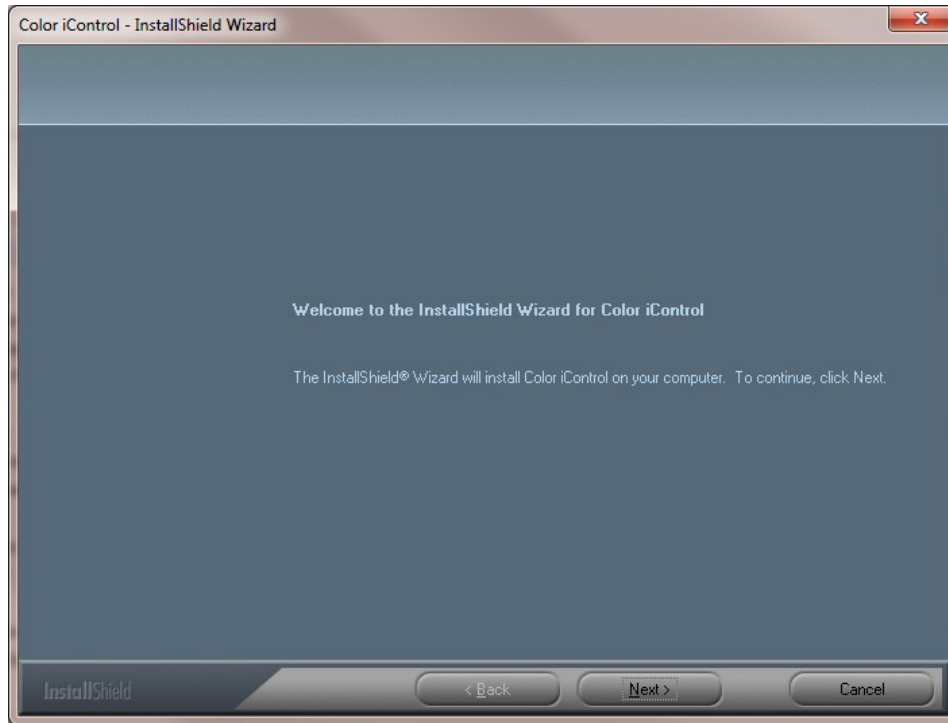
1. Login with full local administrator permissions.
2. Insert the CD and it should Auto Run or use Windows Explorer and double click the installation EXE file. (see installation steps below)
3. Once installation is completed and while still logged in as administrator, right click on the Color iControl desktop icon and choose "Run as administrator". The software will run for up to 30 days in demo mode until fully licensed. While in demo mode you must always log into the computer with full local administrator permissions and "Run as administrator". If you run the software without administrator permissions and "Run as administrator" the demo mode will expire.
4. In demo mode each time you start the software you will have the license dialog appear. At the top it will show the number of days left in the demo period. In the middle is a link to the website to register and receive your license key. At the bottom of the license dialog will be a registration code and a place for the license key. If you do not have internet access on the installed computer you may go to <http://www.xrite.com/registration.aspx> from any computer. Make note of the registration code in the software. If the registration

code is zero or blank you do not have full administrator permissions or did not "Run as administrator.

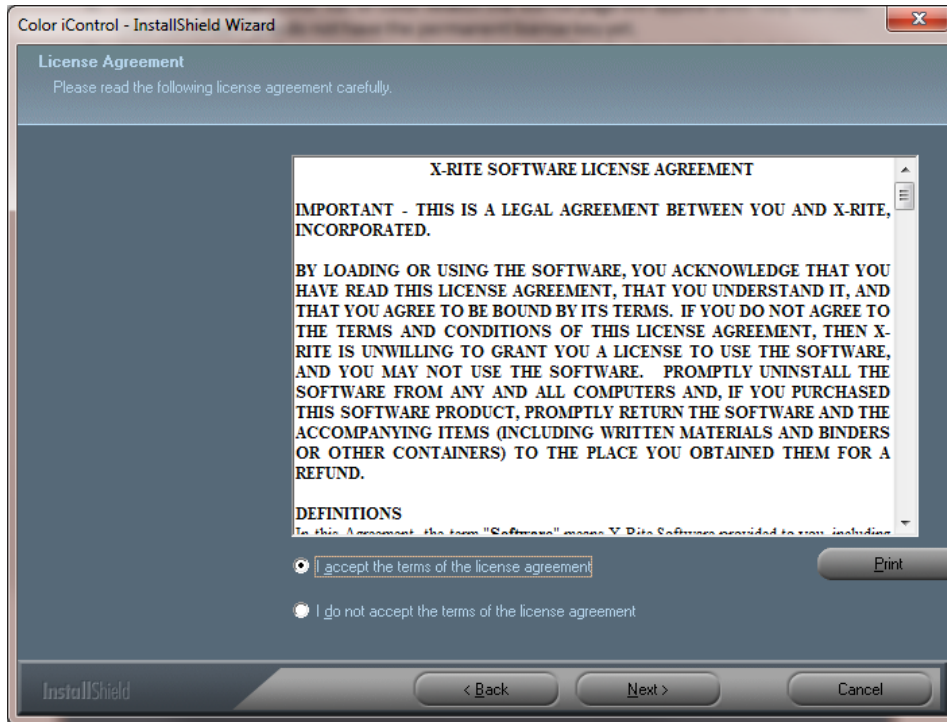
5. You can license the software or click Continue button to continue on in demo mode. The software will automatically guide you through setting up the instrument and your default settings.
6. Each time you start Color iQC or Color iMatch the license page will appear until fully licensed. Click Continue if you do not have the permanent license key yet.
7. Once registered and you receive your license key, enter it in the box provided and click the License button. You will get a message that your product is now licensed.
8. Once fully licensed you will no longer have the license dialog box show up when you start the software and may log into the computer with normal user permissions and do not need to "Run as administrator".

## Color iQC and Color iMatch Installation Screens:

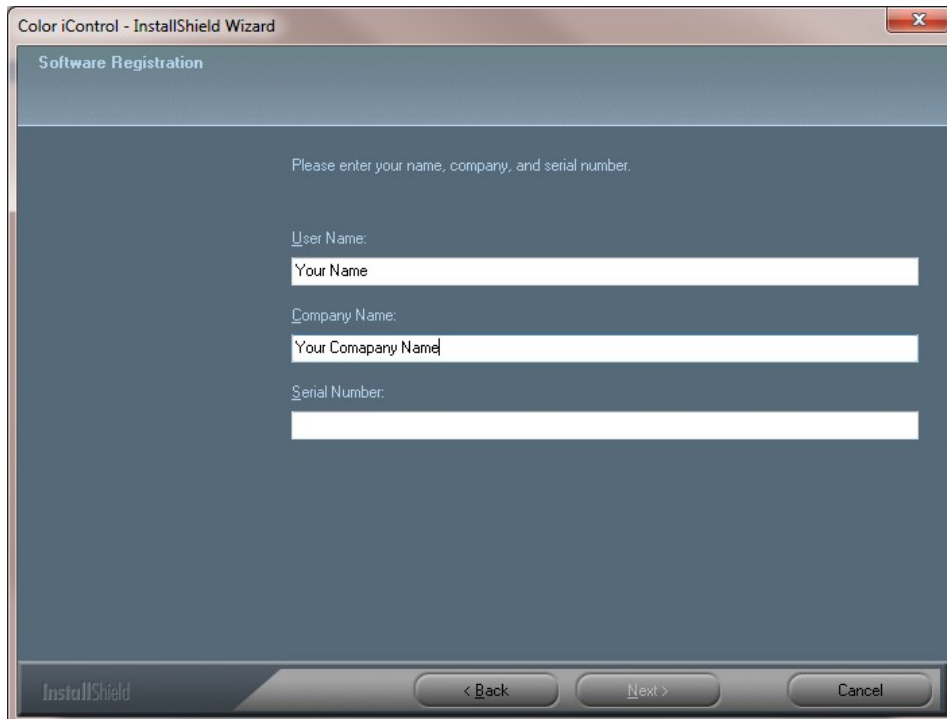
1. Run the installation executable described in step 2 above. Click **Next** to continue:



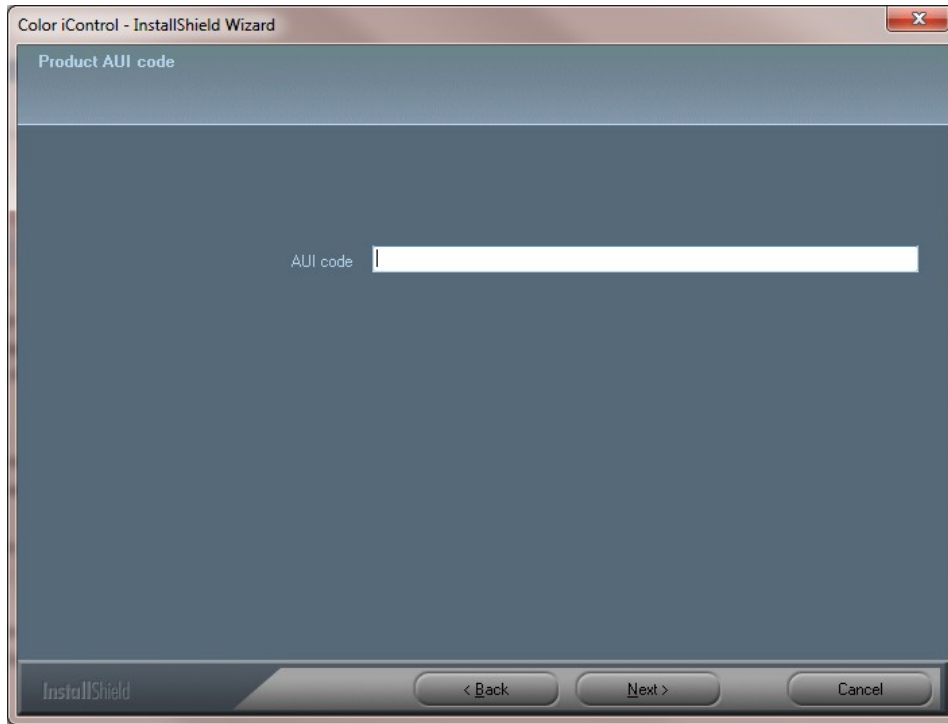
2. Select I accept on the license agreement and click **Next** to continue:



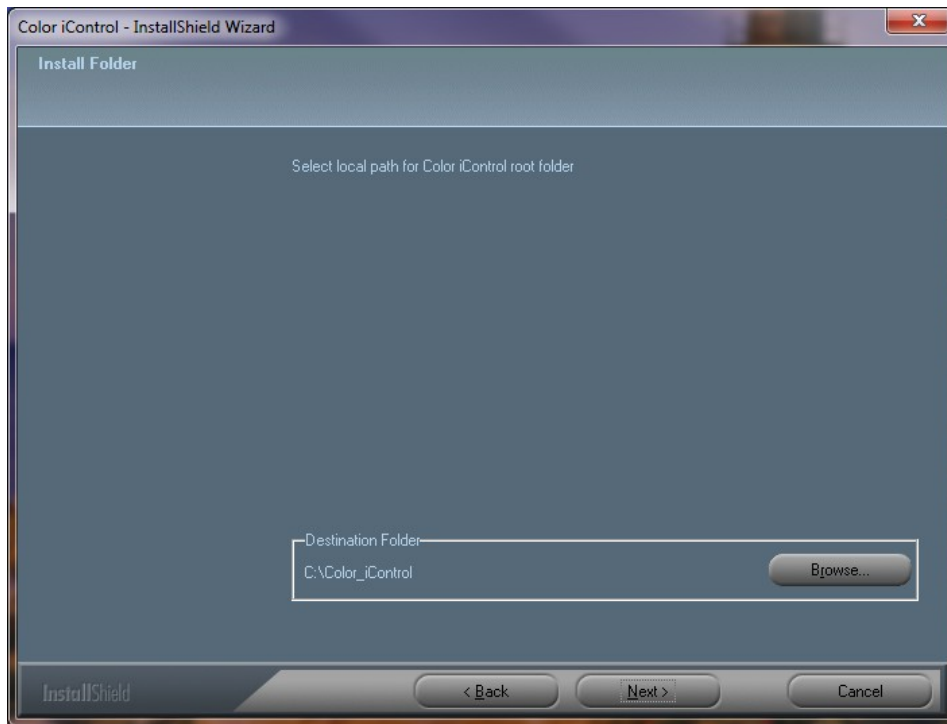
3. Enter in your User name, company name and software serial number from label on the CD case. Click Next to continue:



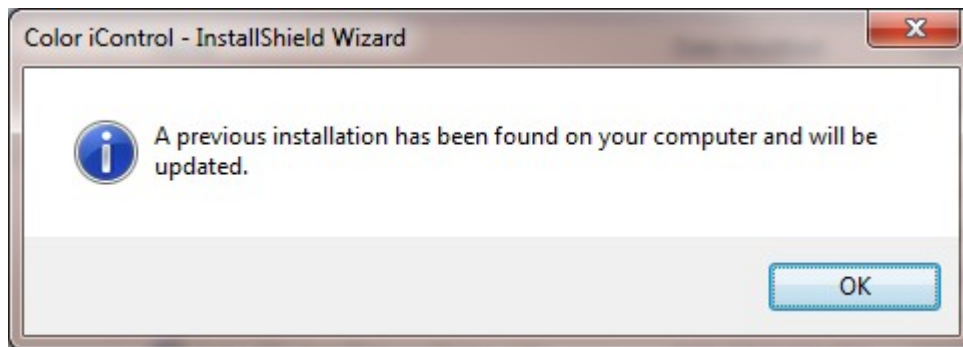
4. Enter your software AUI (Application Unique Identifier) number from the label on the CD case. Click **Next** to continue:



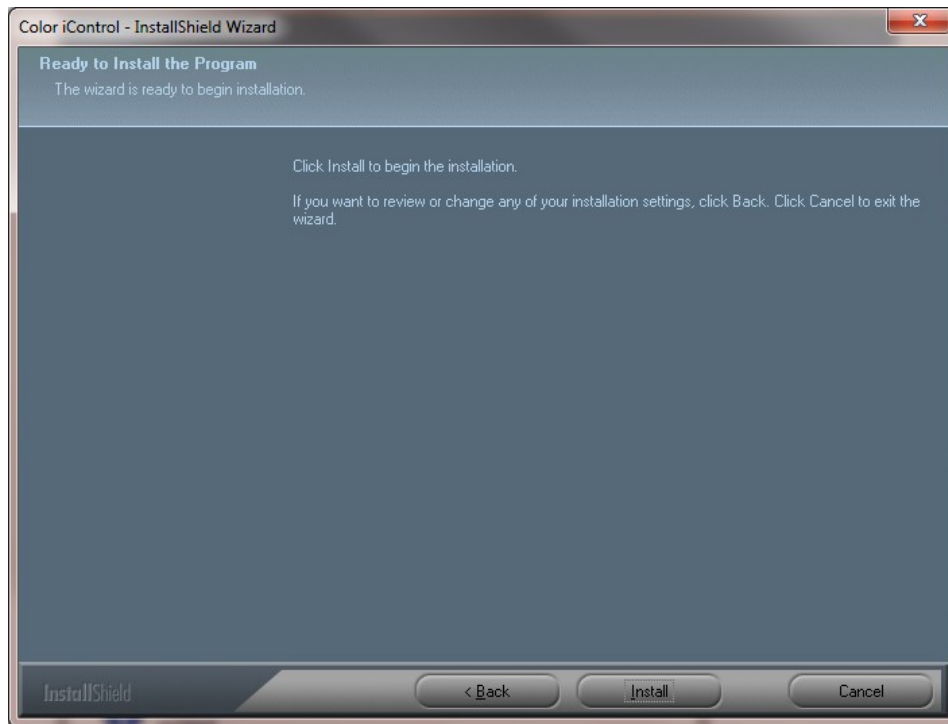
5. If this is a new installation you will be prompted to select a location for the software user data file folders to be located at. The program files will be installed in the C:\Program Files\GretagMacbeth\ or C:\Program Files(x86)\GretagMacbeth\ folders. For more information on user data files please see *Color iControl Folders and Files* document under Color iMatch and Color iQC common helpdesk Questions on [www.XRite.com](http://www.XRite.com).



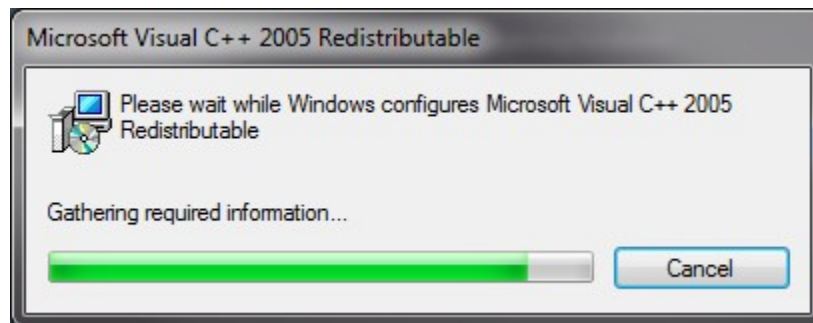
6. If this is an update the software will install to the same folders and upgrade your current version:



7. Click Install to begin software installation:

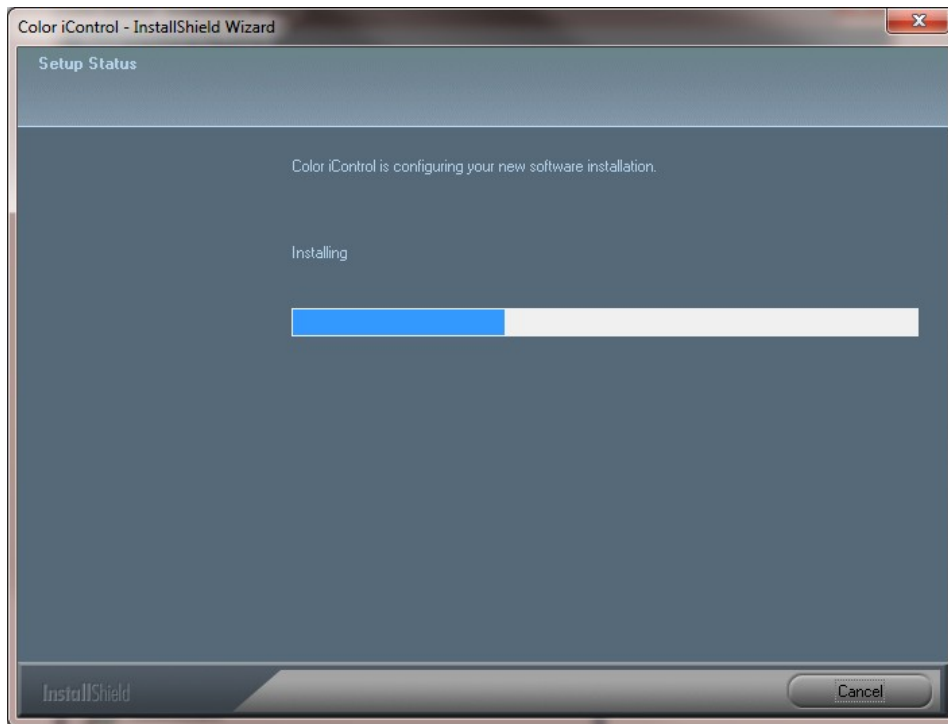


8. Two boxes will appear automatically during software installation. One is the Visual C++ 2005.



9. The other is Setup Status. This will show you the status of the software installation.





10. Once the installation is completed click the Finish button:

